

Fall protection trigger heights for construction activities

Division 3, Subdivision S



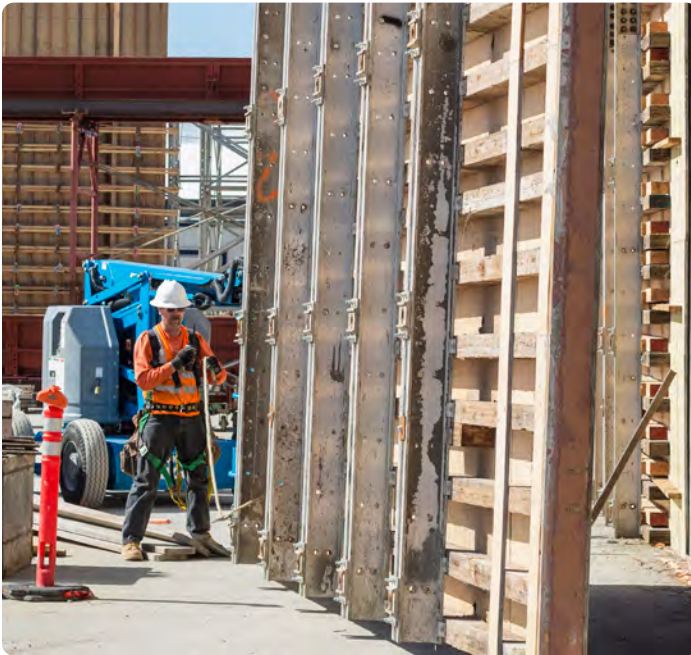
Falls are the leading cause of death in construction.

Oregon OSHA has several rules for construction activities that specify the minimum height at which workers must be protected from falling. These heights are known as “trigger heights.” The table below shows the fall protection trigger heights for construction-related work.

Unprotected walking or working surface	Trigger height			Oregon Administrative Rule (OAR) number
	Any height	Six feet	Ten feet	
General fall protection		≥		437-003-1501(1)
Holes, including skylights (tripping in or stepping into or through)	X			437-003-1501(3)
Wall openings less than 39 inches above walking/working surface		≥		437-003-1501(4)
Excavations not readily seen		≥		437-003-1501(5)(a)
Edge of a well, pit, shaft, and similar excavations		≥		437-003-1501(5)(b)
Walkways over excavations		≥		1926.651(l)
When above or adjacent to dangerous equipment	X			437-003-1501(6)
Scaffolds (supported and suspended)			>	1926.451(g)(1)
Boom-supported elevating work platforms	X			437-003-0073(2)
Vehicle-mounted elevating and rotating work platforms	X			1926.453(b)(2)(v)
Cranes (boom walkways)		≥		437-003-1423(2)

Unprotected walking or working surface	Trigger height			Oregon Administrative Rule (OAR) number
	Any height	Six feet	Ten feet	
Cranes (assembling, disassembling, or otherwise performing work)			>	437-003-1423(2)
Cranes (hoisting personnel)	X			1926.1431(k)(10)(i)
Tower cranes			>	437-003-1423(4)
Underground construction (jumbo decks)			>	1926.800(q)(8)(iii)
Power transmission and distribution (climbers)	More than 4 feet			437-002-2306(2)(d)(l)(ii)
Steel erection (general)	More than 15 feet			1926.760(a)(1)
Steel erection (connectors)	* More than two stories or 30 feet			1926.760(b)(1)
Steel erection (controlled decking zone)	* More than two stories or 30 feet			1926.760(c)(1)

KEY: X = Fall protection system required at any height.
 ≥ = Fall protection system required at heights greater than or equal to the listed height.
 > = Fall protection system required at heights greater than the listed height.
 * Whichever height is less.



More information

- [Oregon OSHA's Fall Protection topic page - Rules and related information](#)
- [Oregon OSHA's Construction topic page - Rules and related information](#)



Visit Oregon OSHA

Workers

Your employer cannot retaliate against you for reporting a workplace health or safety concern or violation. For more information about your rights, visit the Oregon OSHA website.

The Technical Section of Oregon OSHA produced this fact sheet to highlight health and safety programs and rules. The information is intended to explain the rules and provide best practices to employers.

